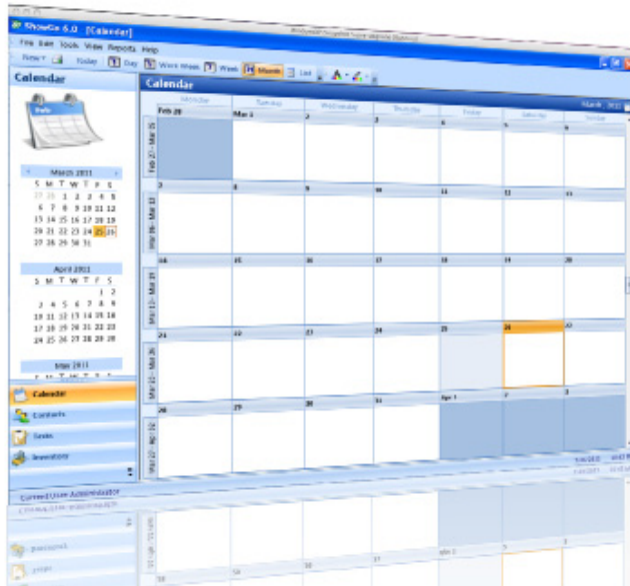




by Seattle Software Corporation

Hosting Solution for ShowGo Trade Show Management Software



ShowGo's Technical Specifications

ShowGo's hosted solution (now with Microsoft Azure) enables corporate exhibit managers and their colleagues to instantly access all their vital trade show management data from any internet connection.

Accessible Anywhere - Access your data anytime, anywhere there is an internet connection. Seattle Software now guarantees 99.99% uptime (through Azure's SLA).

Ease of Use - No need to involve your IT dept during Installation. Let Seattle Software be your IT team. Get up and running immediately with no red tape.

Immediate Upgrades - Since client's IT team is not involved, our team can deploy upgrades quicker allowing the hosted client to immediately take advantage of the latest upgrades.

Reduced costs— Since there is no server cost and maintenance on the client's network the cost of Seattle Software's data hosting is much lower than having the client store the data. Also, with economies of scale, our support team can manage and maintain client's connection and data at a lower cost than their internal IT department. Lower costs equals better value.

Security - Your database is protected, backed up and secure. Only designated people within your organization with the correct credentials can view and/or edit the information.

Support and Maintenance -

- Backup created every 24 hours and kept for 24 hours backed up every 5 minutes
- Triple replicated – Your db is replicated on 3 separate servers. If one fails, we will automatically point it to the second db without you even noticing or having to do anything, then a new 3rd db will be created
- Regular maintenance: 24/7 Access
- Disaster/Data Recovery, Security, Continually Monitored
- Collaborative Problem Resolution

	Price
Data Hosting Solution (per license/month)	\$30
ShowGo Maintenance Agreement (per license/month)	\$60
Prices are subject to change	

For more information:

Shane G Eckel

(206) 286-7677 ext. 5

www.seattlesoftware.com

shane.eckel@seattlesoftware.com



Seattle Software Corporation

Additional Information:

Shane G Eckel
(206) 286-7677 ext. 5
www.seattlesoftware.com
shane.eckel@seattlesoftware.com

Client	
Hardware	<ul style="list-style-type: none">• PC compatible (2Ghz processor +)• 8GB for memory (4GB Minimum);• 2.5 GB of disk space
Software	Operating systems supported: <ul style="list-style-type: none">• Windows 10, all editions including 32 or 64-bit• Windows 8, all editions including 32 or 64-bit• Windows 7, all editions including 32 or 64-bit• .NET Framework 4.5.2
Software Compatibility	Microsoft Office: <ul style="list-style-type: none">• Office 2010 and Office 2013• Adobe Acrobat Reader• Internet Explorer 10+• Chrome• Firefox

Database	
Hosted Database	<ul style="list-style-type: none">• SQL Server Database hosted by Microsoft Azure• Backup created every 24 hours and kept for 24 hours backed up every 5 minutes• Triple replicated – Your db is replicated on 3 separate servers. If one fails, we will automatically point it to the second db without you even noticing or having to do anything, then a new 3rd db will be created• Regular maintenance: 24/7 Access• Disaster/Data Recovery, Security, Continually Monitored
Non-Hosted Database	<ul style="list-style-type: none">• Microsoft SQL Server 2014 Express with Advanced Services